



GCEA

POWERING POSSIBILITIES

NOVEMBER 2023



MAILING ADDRESS

P.O. Box 180
Gunnison, CO 81230-0180



STREET ADDRESS

37250 West Highway 50
Gunnison, CO 81230



ph 970-641-3520
tf 800-726-3523
fax 970-641-7333
web gcea.coop
email gcea@gcea.coop

We want to be social with you!

Like us on Facebook and follow us on Instagram to find out about GCEA events, energy efficiency tips, safety tips and so much more.



facebook.com/
GunnisonCountyElectricAssociation

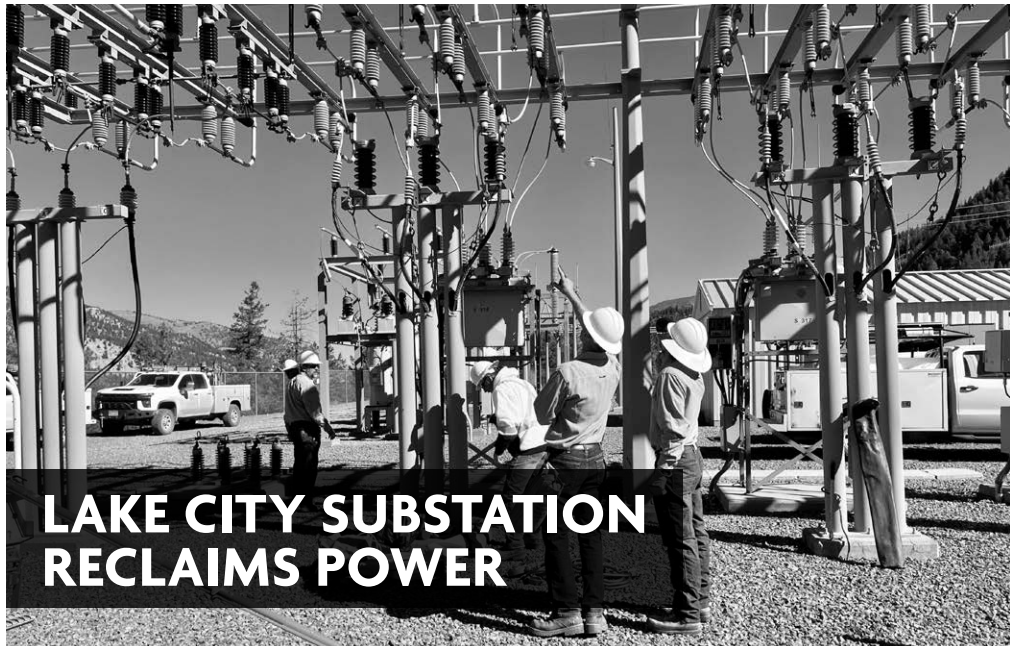


@gcea_news

EMPLOYEE ANNIVERSARIES

Kelley Willis, Accounting Supervisor – 14 Years

Beginning Monday, November 3,
GCEA offices will be open
Monday – Friday, 8:00 a.m. – 4:30 p.m.



Since the February power outage in Lake City, GCEA and Tri-State Generation and Transmission Association crews have been working together to permanently restore power to the Lake City substation. A Tri-State mobile substation was moved into Lake City as a temporary solution, and after several months of waiting on parts, crews were able to install and successfully test replacement equipment before approval was given to switch out the mobile substation. On Friday, October 6, crews transferred electric load from a portion of the Lake City line to the Skito substation in Gunnison. On Monday, October 9, crews completed a planned outage in the Lake City area to disconnect the mobile substation and connect the new equipment. Power was then restored to Lake City and the previous load transfer was re-directed back to Lake City from the Skito substation. The mobile substation is being scheduled to be returned to Tri-State's facility in Montrose.

The cause of the outage was a series of equipment failures that happened simultaneously in the distribution field as well as in the substation. It was an event that could neither have been predicted nor prevented, as equipment checks are conducted routinely, and nothing indicated cause for concern. Tri-State has been a tremendous partner by communicating the outage and dispatching crews quickly to assist GCEA with restoring power.

GCEA continues to work to improve the reliability of our electric distribution infrastructure by rebuilding and strengthening the line to Lake City. We appreciate our members' patience and support while we worked through this challenging situation. Reliability is one of our strategic enduring priorities and we are dedicated to providing consistent electric service for all of our members.

GCEA continues to work to improve the reliability of our electric distribution infrastructure by rebuilding and strengthening the line to Lake City. We appreciate our members' patience and support while we worked through this challenging situation. Reliability is one of our strategic enduring priorities and we are dedicated to providing consistent electric service for all of our members.



◀ GCEA and Tri-State Generation and Transmission crews disconnect the mobile substation in the Lake City area.

SAVE YOUR MONEY..
WINTER
IS HERE!

HAVE YOU THOUGHT ABOUT
 WINTERIZING YOUR HOME?
 GCEA OFFERS FREE ENERGY EVALUATIONS
 AND REBATES TO GCEA MEMBERS!

For more information,
 please scan the QR Code .

WARM WINTER TIPS

- CLOSE CURTAINS AT NIGHT TO RETAIN HEAT IN YOUR HOME; MAKE SURE THAT CURTAINS FIT CLOSE TO WINDOW PANES TO REDUCE DRAFTS.
- OPEN CURTAINS DURING THE DAY TO ALLOW THE SUN TO HEAT YOUR HOME.
- INSTALL A DIGITAL AND PROGRAMMABLE THERMOSTAT TO CONTROL THE TEMPERATURE OF YOUR HEATING SYSTEM. REDUCING THE TEMPERATURE BY 7 TO 10 DEGREES FAHRENHEIT CAN SAVE UP TO 10% OF THE HEATING PORTION OF YOUR BILL.
- SET CEILING FANS TO RUN COUNTER-CLOCKWISE AND THEY WILL CIRCULATE THE AIR AND HELP PUSH WARM AIR DOWN TO WHERE YOU CAN FEEL IT.

STUDENT OPPORTUNITIES

POWERING STUDENTS FUTURES



- FREE
- High school JRs and SRs
- Denver and Washington D.C.
- June 17-23, 2024
- Must be at least 16 at the time of the tour



- FREE
- High school JRs and SRs
- Glen Eden Resort, CO
- July 13-18, 2024
- Must be at least 16 at the time of the camp



APPLICATION DEADLINE IS DECEMBER 1ST
APPLICATIONS AVAILABLE AT GCEA.COOP



Scan the QR code for more information
must be a GCEA member to apply

EXPLORE A SWITCH TO GCEA'S TIME OF USE RATE

Have you heard of GCEA's Time of Use rate? If you heat with electricity and your average monthly bill shows you use more than 1,000 kilowatt-hours per month, GCEA's TOU rate may help you save money on your electricity bill — especially when you limit your on-peak usage to 20% of your total usage. Electricity generation is more expensive during peak times of usage and the TOU rate charges different amounts per kWh (the billing unit) during different times of the day.

Shifting your usage to off-peak times can save you money and helps the electric grid by reducing the demand for electricity during peak time. The rate provides a monetary incentive to use more energy during off-peak times. For example, when your heating

system runs throughout most of the night on cold nights, you can take advantage of the lowest cost per kWh to save money on your electricity bill.

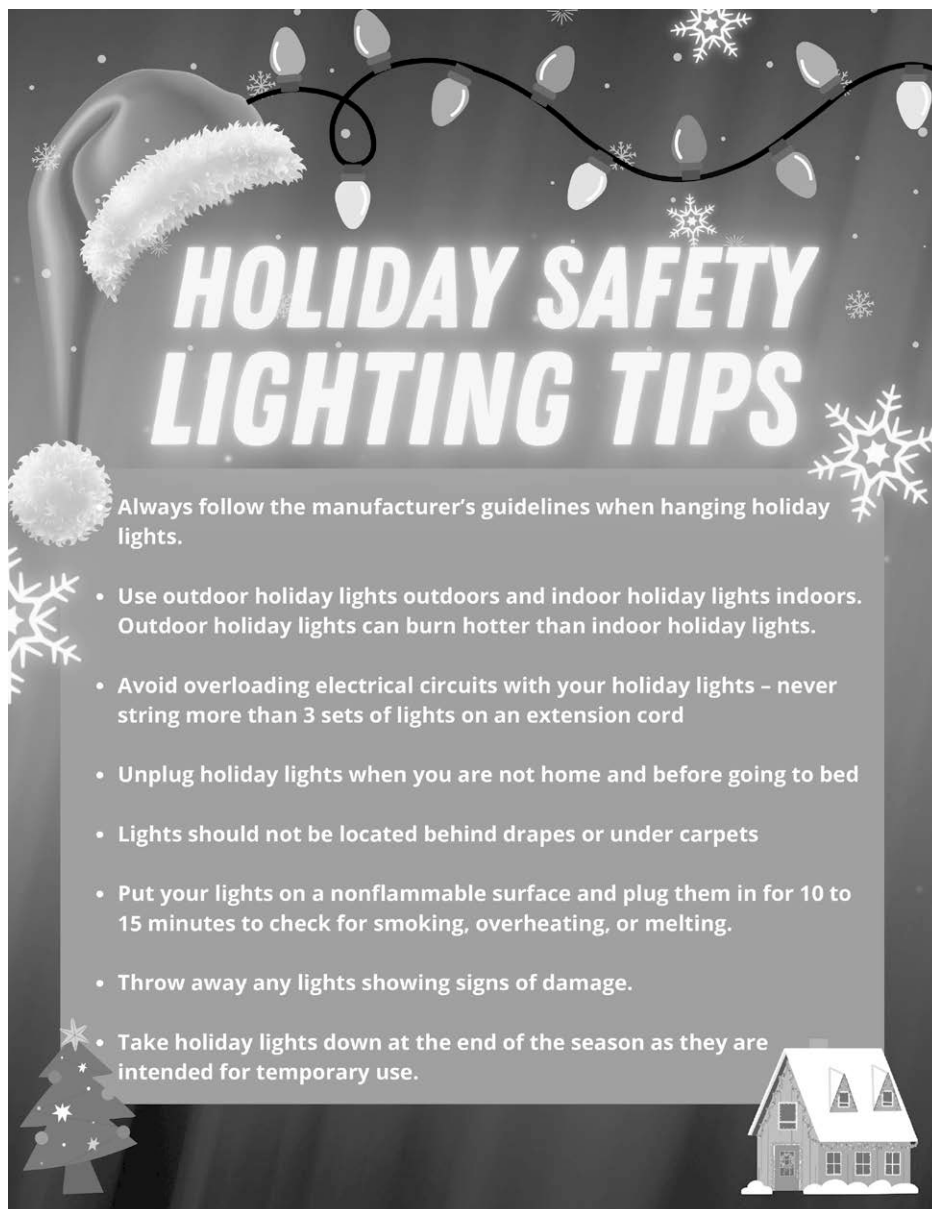
GCEA'S TIME OF USE (TOU) RATE DETAILS:

- On-peak hours: 5 p.m. to 10 p.m., Monday through Saturday
- Off-peak hours: the rest of the time (including all day Sunday)

SINGLE PHASE RESIDENTIAL:

- \$36 monthly service availability fee
- \$0.23664/kWh during on-peak hours
- \$0.08976/kWh during off-peak hours

To find out if a TOU rate would be a good fit for you, contact GCEA Energy Use Advisor Alantha Garrison at 970-641-7319.



HOLIDAY SAFETY LIGHTING TIPS

- Always follow the manufacturer's guidelines when hanging holiday lights.
- Use outdoor holiday lights outdoors and indoor holiday lights indoors. Outdoor holiday lights can burn hotter than indoor holiday lights.
- Avoid overloading electrical circuits with your holiday lights - never string more than 3 sets of lights on an extension cord
- Unplug holiday lights when you are not home and before going to bed
- Lights should not be located behind drapes or under carpets
- Put your lights on a nonflammable surface and plug them in for 10 to 15 minutes to check for smoking, overheating, or melting.
- Throw away any lights showing signs of damage.
- Take holiday lights down at the end of the season as they are intended for temporary use.

DO YOU NEED HELP WITH YOUR ELECTRIC BILL THIS WINTER?

Life happens. Sometimes you need help with your electric bill. It's the time of year when home heating costs increase, and we want you to stay safe and warm this winter. The following resources can help you stay current with your GCEA bill:

- LEAP - Low-Income Energy Assistance Program
- Energy Outreach Colorado
- Gunnison Valley Home Energy Advancement Team (GV-HEAT)
- Housing Resources of Western Colorado
- Energy Smart Colorado

Visit our website at www.gcea.coop to find information and links to all of these energy assistance programs. Click on the dropdown menu **Account Services** and click on **Energy Assistance**.

happy thanksgiving!

GCEA offices are closed Thursday, November 23, and Friday, November 24. Offices reopen Monday, November 27 at 8 a.m.



▲ GCEA members enjoy the end of summer Brats & Kilowatts event hosted by GCEA.



▲ Energy Use Advisor Alantha Garrison prepares for the Coffee with Your Co-op event at the Gunnison Office on October 6.

GCEA IN THE COMMUNITY

Event season closes with Brats & Kilowatts and Coffee With your Co-op

GCEA was busy this summer and fall. We visited our communities to talk with members about what is important to them, teach electrical safety at schools, and host or sponsor fun community events.

In September, GCEA went to Lake City for Cars & Coffee and Brats & Kilowatts. At Cars & Coffee, members had the opportunity to test the new all-electric Ford F-150, Tesla Model 3, and the Chevy Bolt. Brats & Kilowatts was held in Lake City to thank our Lake City members for their patience after the long power outage on that happened on February 6.

GCEA closed out the event season Coffee with Your Co-op gatherings in Gunnison and Crested Butte. Thank you to the members who came out to see us and chat about energy efficiency, rebates, EVs, and beneficial electrification.

We love connecting with you, our GCEA members, both young and old, and getting to know you and how we can serve you better. Please write to us at gcea@gcea.coop and let us know if there are community events you'd like for us to be involved with.



CONSTRUCTION UPDATES

GCEA linemen and operations crews were busy with summer construction projects. Each year, crews perform rebuilds, line relocations, pole changes, and equipment replacements until the snow starts flying.

Below is a list of some of the projects crews have worked on this year. This dedicated group works hard not only during working hours but also go out to fix power outages during the middle of the night and on weekends. Thank you for keeping our power flowing, GCEA linemen!

PITKIN MAIN LINE RELOCATION

Crews relocated some of the main line overhead in Pitkin on 9th Street. This fixed a clearance issue that was created by fill dirt that was placed underneath our existing overhead line.

PITTSBURGH PROJECT

Crews completed cable replacement to Pittsburgh.

WALROD

GCEA line crews changed out two single phase poles up in the Walrod draw. These poles were rotten and identified by pole inspections and GCEA line crews.

TAYLOR RIVER HYDRO

GCEA crews installed the conduit runs from both transformers in the containment pad locations to the foundations of the Taylor River Hydro facility. They also worked on the conduit around the facility to provide a new source of power to the valve house for the dam. A grounding grid has been installed so that backfilling can be completed for the next concrete pour. Project completion is estimated for March 2024.

CORRIDOR RELOCATION

GCEA crews completed the relocation of the 1,000 MCM circuit and have it re-energized. This relocation is being completed to accommodate the Town of Crested Butte's Workforce Housing project.