



# Our Commitment to Reliability

BY **JEFF WADSWORTH** PRESIDENT & CEO

**Last month, we focused on our commitment to affordably and how your member-owned electric cooperative has some of the lowest electricity rates in the entire country.**

This month let's unpack our commitment to delivering you 365/24/7 power. Your board of directors and employee team understand the crucial role electricity plays in our daily lives, and we strive to ensure a consistent and uninterrupted supply of power.

One of the ways we uphold our commitment to reliability is through routine maintenance such as tree trimming, pole replacements, and power line upgrades. Tree trimming is essential as it helps prevent branches and vegetation from interfering with power lines, reducing the risk of outages especially during storms. Regularly replacing poles and upgrading lines keeps our infrastructure strong, capable of handling environmental challenges and meeting growing energy demands.

You can learn more about our current maintenance and construction projects, including where crews are working in your area. Visit us online at [www.pvrea.coop](http://www.pvrea.coop) and search 'Maintenance Updates'.

Additionally, we are dedicated to harnessing the power of technology to enhance reliability. Through continuous innovation and investment, we leverage cutting-edge tools and systems that help us monitor and manage our electrical distribution network more efficiently. These technological advancements enable us to detect and address potential issues proactively, reducing the likelihood of

unplanned outages and minimizing their impact when they do occur.

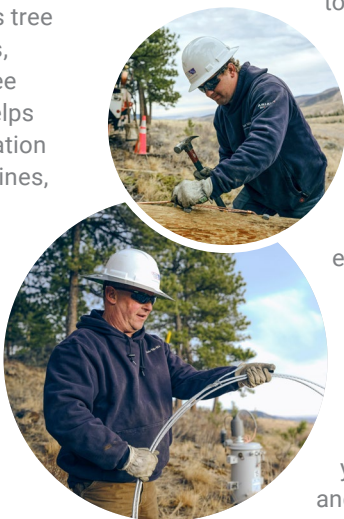
You can read about these types of innovative projects at [www.pvrea.coop/the-co-op/news/](http://www.pvrea.coop/the-co-op/news/).

We also understand the importance of effective communication with our members and the community. We strive to provide timely and accurate information regarding storm related outages, planned maintenance activities, scheduled outages, and any other relevant updates. By keeping our members informed, we enable you to make necessary preparations and minimize any inconvenience caused by maintenance or unexpected events.

The easiest way to manage your notification preferences and update your contact information is through our free mobile smartphone application. Download it today from [www.pvrea.coop](http://www.pvrea.coop).

We recognize that our members rely on us for their essential energy needs, whether it's powering their homes, operating businesses, or supporting critical services. And these proactive measures help us provide you the dependable electricity supply you can count on.

**As your member-owned cooperative, our commitment to delivering safe, reliable electricity at the most affordable cost is always at the forefront of everything we do.**



## ABOUT YOUR CO-OP

PVREA serves energy solutions to nearly 55,000 homes and businesses in Boulder, Larimer, and Weld counties. We are a member-owned co-op, led by those we serve.

## OUR MISSION

We are committed to providing safe, reliable, efficient energy solutions with exceptional service to our members.



## CONTACT US

1-800-432-1012  
[pvrea@pvrea.coop](mailto:pvrea@pvrea.coop)  
[www.pvrea.coop](http://www.pvrea.coop)



## MAILING ADDRESS

Poudre Valley REA  
 7649 REA Parkway  
 Fort Collins, CO 80528



## SOCIAL

[facebook.com/PoudreValleyREA](https://facebook.com/PoudreValleyREA)  
[twitter.com/PoudreValleyREA](https://twitter.com/PoudreValleyREA)  
[instagram.com/poudre\\_valley\\_rea](https://instagram.com/poudre_valley_rea)

## BOARD OF DIRECTORS

Chair	Director
<i>Jack Schneider</i> Weld County	<i>Rick Johnson</i> Larimer County
Vice Chair	Director
<i>Peter Hyland</i> Weld County	<i>Thaine Michie</i> Larimer County
Secretary	Director
<i>Bryan Ehrlich</i> Larimer County	<i>Jan Peterson</i> Larimer County
Director	Director
<i>Steven Anderson</i> Larimer County	<i>Ron Sutherland</i> Boulder County
Director	
<i>Sheryl Dryer</i> Henderson Larimer County	



## FACES, PLACES & VOICES OF



**RON HARPER**

*PVREA and Cooperative Voices Member*

**Participating in the democratic process is the single best way to make your voice heard and shape the policies that affect our community and country.**

When our collective voices come together, we have the power to express the perspective of our electric cooperative as a whole.

As your local, not-for-profit electric co-op, we're committed to looking out for the best interests of our members when it comes to governmental policies that could impact us or our ability to deliver on our mission of providing you the safe, reliable, affordable energy you depend on.

### WHY YOU SHOULD BE INVOLVED

We sat down with one of our members who has been actively engaged with our legislative grassroots efforts. As a member of our Cooperative Voices group, we wanted to ask Ron why he felt it was so important to be engaged in the democratic process.

*"If you're going to sit back and let those not of like mind drive the ship, then you'll end up getting what they want," Ron said.*

By using your voice, you can educate our elected representatives and their staff about the impacts a piece of legislation could have on their constituents. As Ron puts it, you must "make certain that individual who is going to put the check mark down understands all sides of the coin."

"It's not to push them in a direction," Ron said, "but to educate." And that education must happen early and often if we are to build the rapport necessary to influence decisions that impact our communities.

That's even more important when you have expertise or passion for a particular topic. "The more you can do to help educate those individuals (representatives) knowing that they don't have the depth and breadth you do, the better off you will be in the long term," said Ron.

By hearing all sides of an issue, that elected official can better make an educated decision that is right for the majority. There is power in numbers if everyone is on the same page, explained Ron. "Here comes the numbers of people, and all of a sudden, they (the legislators) start listening."

We can help be the majority when our voices come together in unison.

### HOW TO GET INVOLVED

At your cooperative, we actively engage our elected officials at the state and federal levels to ensure our members continue to have a safe, reliable, affordable supply of energy now and into the future.

When we see a particular bill coming down the pike that could impact us, we call upon our Cooperative Voices group to stand up and speak out. We provide you the tools and information you need to easily contact your elected officials and impact policy.

**To learn how you can get involved by enrolling in Cooperative Voices, continue reading on page 9 of this issue or go online to [www.pvrea.coop/cooperative-voices/](http://www.pvrea.coop/cooperative-voices/).**



# Member Credits

**\$2 MILLION ON ITS WAY TO OUR MEMBERS**

**As your local not-for-profit electric co-op, we're not in the business of making profits – we're in the business of serving you.**

Member credits are the share of co-op margins that you've earned by purchasing electricity. It's a way to pay back your investment and represents your ownership of PVREA. Instead of returning profits to stakeholders or foreign investors, we return margins back to you, our members.

*Thank you for investing in your co-op!*

### 2023 Member Credits Retirement Summary

Your cooperative's Board of Directors approved the retirement of **\$2 Million of member credits** for members who received service during 1994, 2005, and 2022, or any combination of those years.

### LIFECYCLE OF MEMBER CREDITS



1. We track how much electricity you use throughout the year.
2. After expenses are paid, we calculate margins.
3. We use margins to pay down debt, invest in facilities and improvement projects, and allocate to members as member credits based on their usage of electricity.
4. If financial conditions allow, we return member credits to members as bill credits.

Member credits under \$600 will be applied to your monthly bill in September. To learn more, search 'Member Credits' at [www.pvrea.coop](http://www.pvrea.coop) or scan this code.



## Weatherstripping Saves Energy

**You should use weatherstripping to seal air leaks around movable building components – like windows and doors. Air sealing older or drafty homes could save you on heating and cooling bills.**

### CHOOSING WEATHERSTRIPPING

Weatherstripping should seal well when the door or window closes while allowing it to open freely. But you'll need to choose a type of weatherstripping that can withstand the friction, weather, temperature changes, and wear and tear that comes with its location.

There are many types, and all have their best uses, advantages, and disadvantages. Read our full blog online to learn about over a dozen types of weatherstripping available to you.

Source: Dept. of Energy

### INSTALLING WEATHERSTRIPPING

Weatherstripping supplies and techniques range from simple to technical. But here are some basic guidelines.

- Weatherstripping should be applied to clean, dry surfaces.
- Always measure twice to cut once!
- Determine how much you'll need by adding the perimeters of what needs to be weatherstripped, then add 5-10% to accommodate any waste.
- Apply weatherstripping snugly against both surfaces allowing the material to compress when the window or door is shut.



Learn more at [www.pvrea.coop/the-co-op/news/](http://www.pvrea.coop/the-co-op/news/) or scan this code.

LET YOUR VOICE  
**Be Heard**

COOPERATIVE  
**VOICES**



## We All Have the Power to Make a Difference

Join your fellow co-op members who are making their voices heard.

When there is legislation that could impact our cooperative, we call upon our members to stand up and speak out.

As part of our Cooperative Voices group, we'll provide you the tools and information you need to easily contact your elected officials.

Enroll in Cooperative Voices at [www.pvrea.coop/cooperative-voices](http://www.pvrea.coop/cooperative-voices) or text **GOCOOP** to 52886.



**VOTER REGISTRATION DAY 9/19**  
Learn more at [vote.coop](http://vote.coop)

## Prepaid Billing

Pay for electricity as you use it.



You decide when and how much to pay. There is no deposit, only an initial \$50 payment to start a positive balance. No late fees. And in most cases, no disconnect or reconnect fees.

When your account balance runs low, you'll receive payment reminder notifications by text or email. Then, make a payment of at least \$5 to ensure a positive balance.



**SIGN UP FOR PREPAID TODAY!**

Scan the code to enroll online or call our office during business hours.

**JOIN THE**

## Co-op Connections Partner Program

**And promote your local business.**

We are committed to building relationships in the communities we serve. We want to partner with you, our local business owners, through our Co-op Connections program to promote both your business and our cooperative spirit.



To learn more about the program and how to get involved, email [communications@pvrea.coop](mailto:communications@pvrea.coop) or scan the code.

**SAFETY CORNER**

Tips for a **Safe Harvest**



**National Farm Safety and Health Week is typically held in September, and we'd like to share resources to help you stay safe around the farm.**

"One critical part of safety around electricity is awareness," explains Erin Hollinshead, executive director of the Safe Electricity program. "It's important to remember that farm machinery is vulnerable to hitting power lines because of its large size, height, and extensions. Being aware of the location of overhead power lines and planning a safe equipment route can help reduce accidents."

**KEEP THE FOLLOWING ELECTRICAL SAFETY GUIDELINES IN MIND**

- Never attempt to move a power line out of the way or raise it for clearance.
- Always keep equipment at least 10 feet from lines in all directions. This includes operating machinery, stacking hay bales, and storing pipe and tubing.
- Inspect the height of farm equipment to determine clearance.
- Use a spotter when operating large machinery near power lines.

- If a power line is sagging or low, contact us immediately.
- Look up and use care when moving any equipment around power lines, such as extending augers or raising the bed of grain trucks.
- Set extensions to the lowest setting when moving loads to prevent contact with overhead lines.
- Grain augers should always be positioned horizontally before being moved.

If the equipment does contact a power line, do not leave the cab unless there is an immediate threat, like fire or smoke. Instead, call 911, warn others to stay away, and wait for emergency crews to arrive and cut the power.

If you must exit equipment that has contacted overhead lines, jump off the equipment with your feet together and without touching the ground and machinery at the same time. Then, still keeping your feet together, hop to safety as you leave the area.

Source: *Safe Electricity*



**Our office will be closed Monday, September 4**

**THANK YOU, WORKERS, AND PLEASE ENJOY LABOR DAY SAFELY!**

**SEPTEMBER 2023**

**Energy Efficiency  
Tip of the Month**

**FALL IS THE PERFECT TIME TO SCHEDULE A TUNE-UP FOR YOUR HEATING SYSTEM.**

Home heating accounts for a large portion of winter energy bills, and no matter what kind of system you have, you can save energy and money by regularly maintaining your equipment.

Combining proper equipment maintenance and upgrades with recommended insulation, air sealing, and thermostat settings can save about 30% on your energy bills.

Source: *energy.gov*

