



# GCEA

POWERING POSSIBILITIES

SEPTEMBER 2023



### MAILING ADDRESS

P.O. Box 180  
Gunnison, CO 81230-0180



### STREET ADDRESS

37250 West Highway 50  
Gunnison, CO 81230



**ph** 970-641-3520  
**tf** 800-726-3523  
**fax** 970-641-7333  
**web** gcea.coop  
**email** gcea@gcea.coop

### We want to be social with you!

Like us on Facebook and follow us on Instagram to find out about GCEA events, energy efficiency tips, safety tips and so much more.




facebook.com/  
GunnisonCountyElectricAssociation



@gcea\_news

**GCEA OFFICE HOURS:**  
**MONDAY – FRIDAY**  
**8 A.M. – 4:30 P.M.**



 Tri-State Generation and Transmission's Ford Lightning.

## ELECTRIFYING TRANSPORTATION

BY ALLIY SAHAGUN MEMBER RELATIONS SUPERVISOR



ALLIY SAHAGUN

You may have wondered over recent years why GCEA is so active in promoting electric vehicles and e-bikes. Yes, these technologies are sleek, cool, and fast, but what is the correlation with your electric cooperative? GCEA seeks to be a leader and trusted resource as you make purchase decisions for your home and workplace. And as your transportation needs change, we are here to share information about how you can save money through rebates and tax credits and why an electric vehicle or bike might be the best choice for your lifestyle.

According to the State of Colorado 2023 EV Plan, transportation is the largest source of greenhouse gas emissions in the state of Colorado. Electrifying transportation is a key strategy for the Polis administration to

reduce GHG and air pollution emissions in Colorado and not only improve our quality of life but also help save money on fuel and maintenance costs. This win-win result of electrifying transportation is called “beneficial electrification” and dovetails with a few of GCEA’s new strategic priorities. As more GCEA members electrify their rides and GCEA works to electrify its fleet, we are collectively reducing greenhouse gas emissions, improving air quality, and saving money as we fuel-switch from gas to electric.

In this month’s issue, we will share ways to make EV and e-bike adoption affordable and digestible. As with any new technology, there are lots of questions and we are here to share the environmental and budget-friendly benefits that come with riding and driving electric.

**REBATES**  
**USED ELECTRIC VEHICLES**  
 Environmentally friendly, cost savings,  
 and easy to operate!

Scan the QR code  
 to view rebates.

**GCEA**

**\*MUST BE A GCEA MEMBER TO RECEIVE REBATE\***

## HOW CAN I SAVE MONEY ON AN EV PURCHASE?

With more than 25 fully electric and plug-in hybrid models starting under \$45,000 (and many less than \$30,000) including sedans, crossovers, and SUVs, there are now EVs for many budgets. Visit the Electric Vehicles page on [www.gcea.coop](http://www.gcea.coop) for a convenient EV finder that filters and sorts EV makes and models based on what features are important to you.

**New Vehicle Tax Credits:** To bring costs down further on new EVs, there is a federal tax credit of up to \$7,500 on qualifying EVs and a Colorado state tax credit of \$5,000 when you purchase or lease a new EV with an MSRP up to \$80,000. Beginning January 1, 2024, EVs less than \$35,000 MSRP will be eligible for an additional tax credit of \$2,500.

**Used Vehicle Tax Credits:** Beginning January 1, 2023, if you buy a qualified used EV from a licensed dealer for \$25,000 or less, you may be eligible for a used clean vehicle tax credit. The credit equals 30% of the sale price up to a maximum credit of \$4,000. GCEA also offers a used EV rebate of 25% of the cost up to \$1,000 for all-electric vehicles and up to \$500 on plug-in hybrid vehicles with a minimum battery range of 25 miles.

## WHICH EV SHOULD I BUY?

As with any vehicle purchase, the vehicle's price, features, and size are important when deciding, but battery range must also be considered with electric vehicles. EV driving range varies, but typically, drivers can expect an average of 250 miles from a single charge on all-electric vehicles. Keep in mind there are factors that can affect an EV's range, including weather, battery size, and more. Online research will help you narrow down which makes and models are a good fit, and then kicking the tires with a test drive is the ultimate step in making the decision. GCEA is proud to offer test drives of our Tesla Model 3, Chevy Bolt EV, and coming soon, our new Ford F-150 Lightning truck.



**▲** GCEA's Chevy Bolt charges on Mount Crested Butte.



**▲** A GCEA representative chats with members about the benefits of owning an electric vehicle.

## HOW WILL I CHARGE?

Since 80%-90% of all EV charging happens at home, charging your electric vehicle is as simple as plugging in when you're parked for the evening. You can schedule your vehicle to charge during GCEA's off-peak hours after 10 p.m., and when you switch to GCEA's time-of-use rate, you can pay as little as \$0.09 per kWh to charge. Or, if you commute to work and have a convenient place to plug in, you can also charge off-peak during the workday. **If your EV charges to 80% battery level each day and you consume 10% to 20% of the battery with daily driving habits, it would cost you less than \$2 to recharge on a Level 2 charger at home.**

To make home EV charging more affordable, there is a federal tax credit of 30% of the cost up to \$1,000 for Level 2 stations. GCEA offers a rebate of 50% of the cost up to \$1,250 for Level 2 station equipment and installation costs.

During long-distance travel, Level 3 or DC fast charging may be required to quickly recharge your vehicle and get you back on



▲ A Rivian electric truck charges at the Lake Fork charging station.

the road. Excessive DC fast charging is not good for overall battery life, so this type of charging should be used sparingly. Planning road trips around regular meal and rest stops near DC fast chargers makes recharging enjoyable and convenient. Many EV drivers comment on how easy it is to find charging stations using an app like PlugShare or ChargePoint.



## HOW MUCH WILL I SAVE ON FUEL & MAINTENANCE COSTS?

On average, studies have shown that electric vehicles are 40% less costly to maintain than gas-powered cars. Fully electric cars use approximately 20 moving parts, as opposed to more than 2,000 moving parts found in gas-powered cars. This means you'll have fewer parts to maintain over your EV's lifespan, leading to lower maintenance costs. And you can save between 66% and 75% to "fill up" at home compared to the price of gasoline. The price of electricity is much more stable than the price of gas, keeping your charging costs at home much more predictable and consistent than your gasoline budget.

## WHAT ARE THE ENVIRONMENTAL BENEFITS OF AN E-BIKE VS. A CAR?

Choosing to pedal an e-bike compared to driving into town with a gas-powered car has tremendous benefits both for your health as well as the environment. E-bike manufacturing has a much smaller carbon footprint than producing a new car, and over the life of an e-bike compared to a car, there is less consumption and waste with maintenance and eventual disposal. E-bikes save emissions from gas production as well as fuel combustion and are extremely energy-efficient by yielding the equivalent of 1,000 miles per gallon. If commuting a short distance is your regular routine, switching to an e-bike could have considerable savings on your wallet as well as the environment.

**REBATES**  
ELECTRIC BIKES  
Environmentally friendly, fun,  
and easy to operate

Scan the QR code  
to view rebates.

**GCEA**

\*MUST BE A GCEA MEMBER TO RECEIVE REBATE\*

## ARE THERE REBATES ON E-BIKES?

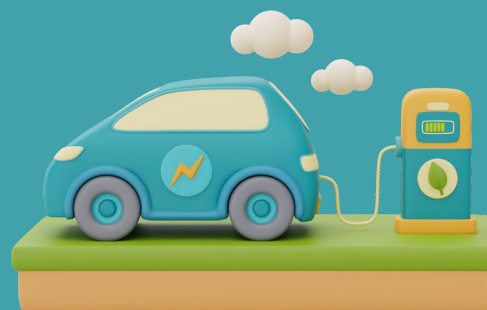
GCEA's e-bike rebate is the most popular rebate we offer and gives back 25% of the cost up to \$150 on new equipment. Residents of Mt. Crested Butte can also take advantage of an e-bike rebate up to \$600 when purchased from a bike retailer in Mt. Crested Butte.

**EMPLOYEE ANNIVERSARIES**

- **RON COPENHAVER** — Engineering Technician, 23 years
- **BRIAN MUTH** — Engineering Technician, 17 years
- **ALLIY SAHAGUN** — Member Relations Supervisor, 5 years

Thank You

**GCEA  
ELECTRIC  
VEHICLE  
PROGRAMS**



**GCEA ISN'T EXACTLY IN THE CAR BUSINESS, BUT WE HAVE BEEN A PROGRESSIVE FORCE IN THE STATE OF COLORADO TO PROMOTE ELECTRIC VEHICLE (EV) USE.**

**EV TEST DRIVE PROGRAM**

**HAVE YOU EVER WONDERED WHAT IT'S LIKE TO DRIVE AN ELECTRIC VEHICLE? NOW'S YOUR CHANCE!**

The Bolt may be borrowed by GCEA members a week at a time, to drive free of charge and without mileage restrictions. Our Tesla Model 3 can be taken on a short 30-minute guided test drive with a GCEA representative.



**USED EV REBATE**



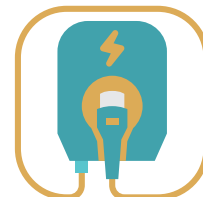
- Used BEVs; 25% off purchase price up to \$1000
- Qualified used PHEVs; 25% off the purchase price up to \$500
- Used PHEVs must have an EPA rated all-electric range of at least 25 miles
- One rebate per VIN

\*Powered by PowerWise™ Pledge Rebate Program

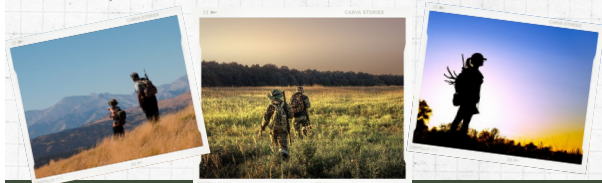
**EV CHARGING STATION REBATE**

**GCEA OFFERS REBATES FOR LEVEL 2 EV CHARGERS INSTALLED AT MEMBER PROPERTIES. REBATE REQUESTS MUST BE MADE WITHIN 90 DAYS TO QUALIFY.**

Level 2 EV Charger & Installation rebate – 50% of the cost, up to \$1250. Must sign up for GCEA's time of use rate (TOU).



**GUNS & ELECTRICITY DON'T MIX**



**PRACTICE HUNTER SAFETY**

When bullets hit vital parts of the electric grid, the results can lead to power outages and expensive repairs. GCEA is asking members and the hunting community for help as hunting season approaches.

**NEVER** use electrical equipment for target practice  
**SHOOTING AT ELECTRICAL EQUIPMENT CAN CAUSE FIRES!**



970-641-3520

gcea.coop

**BE PREPARED.  
STAY SAFE.**

Are you prepared for a natural disaster? Unexpected and tragic events can happen close to home, as we saw with the recent wildfire in Gunnison County.

Pack an emergency kit that you can grab in case you are evacuated from your home. Here are a few things that should be in your preparedness supplies.

**FIRE EVACUATION  
PREPAREDNESS KIT**

- ✓ Water & food
- ✓ Blankets
- ✓ Clothing
- ✓ Prescriptions
- ✓ Toiletries
- ✓ Flashlights
- ✓ Radio & clock
- ✓ Batteries
- ✓ Phone
- ✓ Camera
- ✓ Money
- ✓ Important documents
- ✓ Books & games
- ✓ Pet supplies



For more information, scan the QR CODE or visit [gcea.coop](http://gcea.coop).

