



SUMMER PROJECTS

BY VIRGINIA HARMAN GENERAL MANAGER

I know I am not alone in saying June 21 — the first official day of summer — could not have come soon enough this year. Every season throughout our beautiful region has its own special characteristics and opportunities for recreation. Summer, though, with its warming sun, full rivers, wildflowers, and community events always provides a much-needed reprieve from the winter.

Just as activities around our lakes, parks, and trails increase with the summer weather, so does progress on Mountain Parks Electric projects. Our crews respond 24/7 year-round to keep the lights on, and we recently recognized three outstanding linemen for their after-hours outage restorations (see page 8). Between May and November, our crews also coordinate with contractors to support construction and fire mitigation efforts across our service territory.

Whenever I have a rare break from my office responsibilities, I like to get into the field to visit MPE project sites and see our crews at work. This helps me to stay up to speed on progress and any challenges that may arise. Plus, it is great to see MPE crews putting their years of training and experience to work for our community. I'd like to

share a few updates on important projects our crews are working on this summer.

According to our most recent online survey, 91% of the 173 respondents support MPE undergrounding new residential services, despite it being a more expensive process. There are many benefits to undergrounding lines, namely fire mitigation. Two of our most significant recent undertakings involve undergrounding lines following the East Troublesome Fire. We just finished the Highway 125 project, which began last summer. Thanks to FEMA disaster relief funding, we saw 8 miles of lines go underground. The second project involves undergrounding the entire Trail Creek subdivision, again thanks to FEMA funds. The first of two phases of this project began in June, and we hope to complete it by the end of this year.

Our crews also recently built out more than 200 new meters for the River Run Smith Creek addition in Granby and more than 6,000 feet of additional underground lines for a new addition to the Rendezvous subdivision in Winter Park.

The MPE operations and engineering departments have been coordinating with

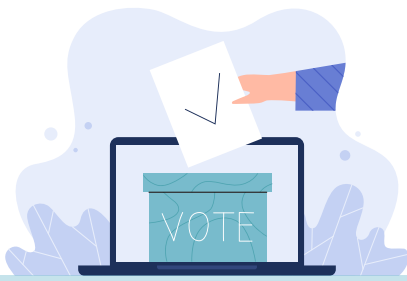
contractors at the new Granby Elementary School to add transformers and underground lines to feed the new facilities. We are also excited to work with the East Grand School District to install a new transformer for its bus charging infrastructure. With these upgrades, the district will be able to accommodate a future fleet of up to 10 electric buses.

Watching these projects take shape is not only a testament to our dedicated MPE staff, but also to our community's resilience following the tragic East Troublesome Fire. It is also a tribute to our members' support of undergrounding power lines and the use of electric vehicles. I hope you all have an enjoyable and safe rest of your summer. Please continue to participate in our quarterly survey (www.mpei.com/online-survey). When you participate, you are entered for a chance to win a \$100 credit on your MPE bill, and we use the feedback to provide better service to you.

▲ MPE linecrews meet before beginning work adding transformers and underground lines at the new Granby Elementary School. This is one of several projects MPE crews are working on this summer.



VIRGINIA HARMAN



**REMINDER FOR
RUNOFF ELECTION
AND VOTING OPTIONS**

2023 MPE District 1 Runoff Election
(continuation of May 13 annual meeting)

DATE: Thursday, August 10, 2023

TIME: 8:00 a.m.

LOCATION: Mountain Parks
Electric Headquarters
321 West Agate Avenue, Granby, CO 80446

AGENDA:

1. District 1 Runoff Election
2. Adjournment

**3 WAYS TO VOTE IN THE
DISTRICT 1 DIRECTOR
RUNOFF ELECTION**

IN PERSON: Join us at 8 a.m. on August 10 at Mountain Parks Electric Headquarters.

BY MAIL: Use the prepaid/addressed envelope that's included with the ballot you'll get in the mail. Must be received by August 7.

BALLOT BOX: Find the ballot box at the front entrance of MPE Headquarters. Must be received by 12 p.m. on August 9.



For more information and candidate biographies, scan this QR code with your smartphone.

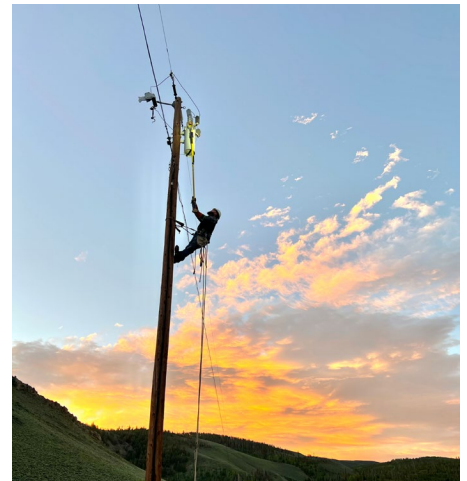
**MPE EMPLOYEES WORK
TO SERVE MEMBERS**

Mountain Parks Electric staff is comprised of high achieving people who are committed to our communities and members. During the June MPE employee meeting, four MPE staff members were recognized for their recent work accomplishments and contributions to the co-op.

In the four days between June 15–18, Journeyman Lineman Jose Vargus and Apprentice Linemen Scott Crawford and Josh Smethurst responded to 10 after-hours calls. Members called to report issues such as power disturbances due to lightning strikes near Grand Lake and Heeney, a bird in a transformer, and a tree on a line in Winter Park. “Our linemen are trained to

work all hours to keep the lights on. They go out all hours of the day, and one could say this was a normal on-call week in a lineman’s life,” Manager of Operations and Engineering Adam Paulson said. “I’m proud of what Scott, Josh, and Jose did over that long weekend.”

Lindsay McCann has served at MPE for more than 25 years, and she always puts members first. “Being a Member Services Specialist is in her blood, and she always makes sure each member is treated fairly,” Customer Care and Billing Supervisor Amanda Rosenbergh said. Lindsay is also very active in her local Hot Sulphur Springs community where she is a board member and secretary for the chamber of commerce.



Upper left: Lindsay McCann is a dedicated 25-year employee.

Upper right: Scott Crawford works before the sun rises.

Bottom: MPE linemen Scott Crawford, Josh Smethurst, and Jose Vargus.

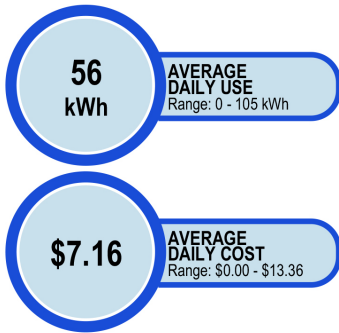
YOUR MPE BILL HAS A NEW LOOK

Thanks to member feedback, Mountain Parks Electric updated the look of your electric bill to include new features. “The new re-design has so many features that we know the members will love,” Customer Care and Billing Supervisor Amanda Rosenbergh said.

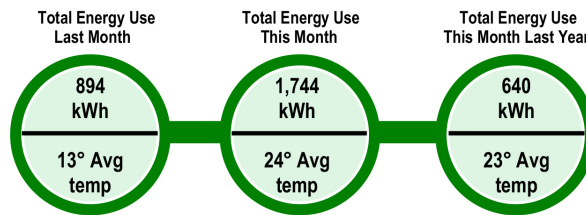
Improvements you might notice on your August bill include:

- Improved readability
- Details of each charge
- A comparison of your monthly energy use
- Updated usage graphs that include average temperature, average daily usage, and average daily cost
- A clearer explanation of net metering

Your Average Daily Use



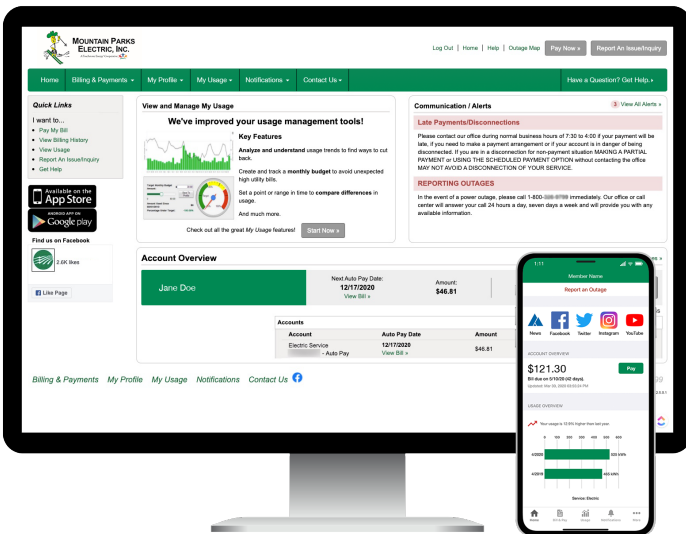
Monthly Energy Use Comparison



▲ New features on your MPE bills include average daily and monthly usage graphics.

Get SmartHub and Go Paperless

Are you tired of paper clutter taking up counter space in your kitchen? You have the option to use SmartHub and sign up for paperless billing for your Mountain Parks Electric bill.



▲ The SmartHub online portal and app offer many easily-accessible features for MPE members.

On the SmartHub online portal or app, you can:

- Manage your MPE account
- Make one-time payments or sign up for automatic payments to avoid fees
- Review billing and payment history
- Manage notifications, including power outage updates and high usage alerts
- View and download your monthly, daily, or hourly electric usage

Scan this QR code to learn more about SmartHub!

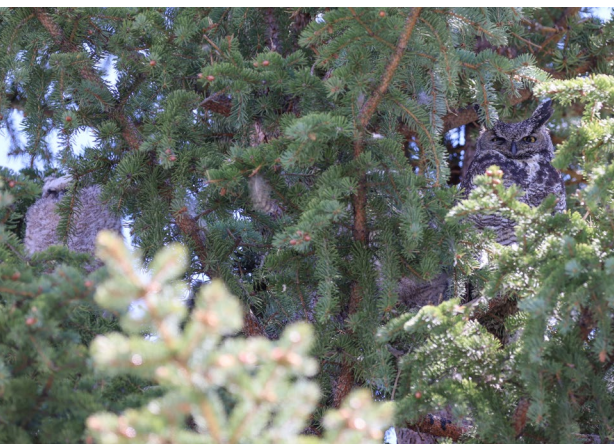


MPE WELCOMES NEW MANAGER OF MEMBER RELATIONS/COMMUNICATIONS

Aaron Street joined Mountain Parks Electric in June as the new Manager of Member Relations/Communications. After a 22-year career as a communications professional, Aaron and his family feel blessed to have joined the team and communities at MPE, Granby, and Grand and Jackson counties. He and his wife, Viktoriya, have only begun to explore the area's trails, and their children Lera, Bradley, and Jordan are excited for their first ski season.



Aaron and Viktoriya Street.



Look closely at your surroundings to see what may be hiding in plain sight. Remember to keep your distance when photographing wildlife.
Photos by Raymond Gabriel.

IF YOU BLINK, YOU MIGHT MISS IT

BY RAYMOND GABRIEL MPE DIGITAL MARKETING COORDINATOR

In the breathtaking wilderness of Colorado, a world teeming with wildlife awaits discovery by only the eagle-eyed observer. Peregrines, porcupines, brown bats, bobcats, chipmunks, and smelly skunks — you never know what you might see. However, one must remember to slow down and take a good look, or these well-hidden creatures might go unnoticed, even when perched in a tree right beside you.

Since the dawn of life on earth, animals have been programmed with an instinct to hide. Over time, they evolved, blending into their habitat. Take the Great Horned Owl, for instance. It is a nocturnal hunter and day sleeper and relies on its natural camouflage to protect it from daytime predators. Their feather patterns make them nearly invisible to the naked eye. This year, Mountain Parks Electric was fortunate to have a family of great horned owls call its parking lot their home. If you'd like to see more photos of the owl family, visit the MPE Facebook page.

Do you want to photograph wildlife?

Here are some helpful tips to begin wildlife photography:

- **Use a telephoto lens:** A camera with a zoom lens will ensure you keep a safe distance from the animal.
- **Research:** Learn migration patterns, favorite foods, and tracking prints. Find out when they are most active.
- **Timing:** Animals like deer, elk, and moose are most active during dusk and dawn, the golden hours of photography.

If it is an owl you seek, look for fallen feathers, branches, or a large quantity of droppings at the base of a tree. They love the concealment of dense evergreen trees. Listen for hooting at night. Mid-summer to early autumn is a perfect time to look for owls. This is when the young owlets, sometimes easier to spot, are stretching their wings for the first time.

Remember, do your research, give respect to the wildlife, and keep your distance. The more you educate yourself and practice, the more likely you will cross paths someday.