



GCEA
POWERING POSSIBILITIES

JULY 2022



MAILING ADDRESS

P.O. Box 180
Gunnison, CO 81230-0180



STREET ADDRESS

37250 West Highway 50
Gunnison, CO 81230



ph 970-641-3520
tf 800-726-3523
fax 970-641-7333
web gcea.coop
email gcea@gcea.coop

We want to be social with you!

Like us on Facebook and follow us on Instagram to find out about GCEA events, energy efficiency tips, safety tips and so much more.



facebook.com/
GunnisonCountyElectricAssociation



@gcea_news

The Great Renewable Energy Transition

BY MATT FEIER STRATEGY EXECUTION SPECIALIST



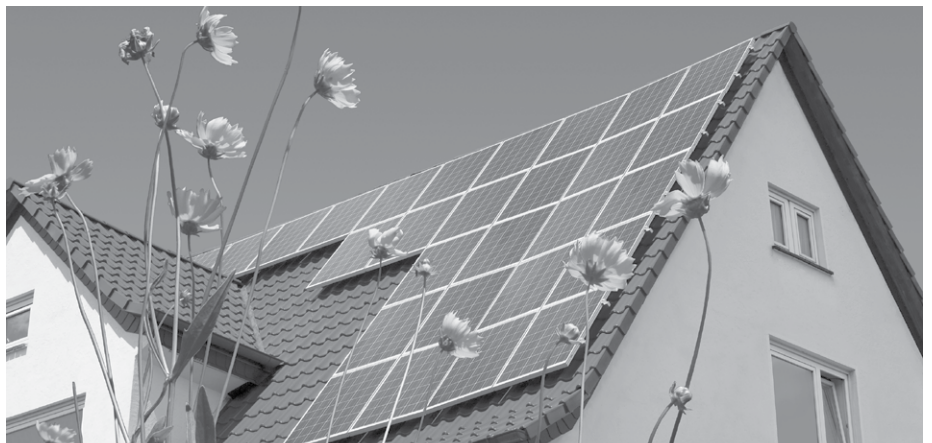
MATT FEIER

GCEA continues to respond to members' needs and lead in the great renewable energy transition. At the May 2022 board meeting, the GCEA Board of Directors passed a new distributed generation (DG) rate that will allow large power members (electric services with load requirements greater than 50 kilowatts but less than 750 kW) to install a DG system larger than currently allowed under GCEA's net metering tariff. This new DG rate will allow large power members to install and operate grid-attached DG facilities (solar arrays, windmills, small hydro turbines, etc.) as large as 125 kW, as long as the size of the new facility does not exceed 120% of the member's yearly energy consumption. The new DG rate is structured similar to GCEA's large power rate and includes the same service availability charge, energy charge and demand charge. Member-produced DG power sent back to GCEA's grid is calculated on an hourly basis, and payment for this power is provided to the member on a monthly basis at GCEA's avoided cost rate.

GCEA also offers members two existing net metering rate options: residential net metering and commercial net metering. Both rate options are available in single-phase and three-phase formats,

and both limit facility sizes to 120% of the member's yearly energy consumption. The existing residential net metering rate further limits the generation facility size to 10 kW, while the existing commercial net metering rate limits generation facility size to 25 kW. The net metering rate options allow members to bank excess generation and offset electricity they use in the future. Net metering members may elect an annual true-up period, at which time any unused excess generation will be paid out to the consumer at GCEA's avoided cost; alternatively, a member may choose to roll-over unused excess generation perpetually.

The GCEA board and staff will also continue to work to develop other potential residential and small commercial DG rate options that may allow interested members to build larger, grid-attached renewable energy systems where the increased system size is not subsidized by the membership as a whole. The key to creating effective, new DG rate options for larger renewable energy systems is to create rate structures that both incentivize members to undertake these projects and do not subsidize the financial impacts of these developments with the rates paid by the larger membership.



2022 SCHOLARSHIP RECIPIENTS

GCEA has provided student scholarships for decades thanks to unclaimed patronage capital; the generosity of members; the Allen, Somrak and Drake families; Tri-State Generation and Transmission; individual directors; and GCEA employees. Congratulations to this year's scholarship recipients.

NEW STUDENTS

Allison Jose
Andrew Huffman
Anna Cattles
Arjun Bacigalupe
Ashlyn Billings
Bennett Levine
Cameron Turpin
Caroline Bryndal
Caroline Thompson
Cathryn Holt
Cory Huggard
Eleanor Veit
Elias Freed
Emeline Rollins
Emma Taylor
Erik Wasinger
Garrett Brauch
Hannah Weil
Harper Smith
Havaline Haskell
Hayes Freeman
Jeremy Utt
Jocelyn Metcalf
Jordan Brockschmidt
Joshua Brockschmidt
Kammie Henderson
Kendall McDonald

Leigha Bell
Lhotse Wyckoff
Madeleine Boggard
Memphis Wuest
Merloe Houseman
Noa Rottman
Nola Hadley
Paige Taylor
Samantha Lakoski
Samantha Merck
Shayla Rightsell
Sooner McKay
Tate McGinn
Winter Painter

RETURNING STUDENTS

Alexandra Hays
Alexandra Riser
Amber Flynn
Anabelle Faivre
Anna Gallowich
Annelise Pelletier
Ashleigh MacLennan
Ashton McGinn
Aulea Rollins
Brant Stickler
Caleb Lindahl

Chrisopher Myers
Claire Cunningham
Clay Sabrowski
Connor Wirsing
Courtney Stickler
Dakota Wiggins
Dillan Hickey
Elizabeth Felix
Ella Lapello
Evan Parmeter
Gavin Mowery
Hayden Faivre
Hilt Freeman
Hope Freeman
Ian Hall
Isabel Russell
Isacs Borchers
Ivy Pelletier
Jaycee Fuller
Jesse Fulkerson
Jessica Palmer
Jigmet Diki Sherpa
John Smith
Josh Merk
Joslyn Hays
Kade McGinn
Karis Copenhaver
Katelyn Hickey

Katie Trautman
Kelley Sherman
Lily Fessenden
Lily Hanna
Lily Talbot
Linda Horne
Lucy Duryea
Luke Bacaialli
Luke Collins
Lydia Loken
Madelynn Felix
Madison Pankey
Molly Talbot
Naomi Bilow-Makler
Nico Marchitelli
Olivia Gordon
Owen Forsythe
Paige Thompson
Peter Sperl
Ruby Laemmel
Siena Truex
Slater Weil
Sophia Borchers
Sophia Truex
Sophie Teitler
Tatum Young
Yvon Michel



GREEN POWER PROGRAM

For a little extra per month, the Green Power Program offsets your electric usage with renewable energy credits (RECs).



POWERWISE PLEDGE™

Reduce carbon emissions by taking the PowerWise Pledge™. Your support will help fund local renewable projects and new rebates.



COMMUNITY SOLAR GARDEN

An affordable way to promote local solar production and reduce harmful greenhouse gas emissions.



In the late 1800s, when the town of Tin Cup was mining gold and silver, supplies were purchased from Gunnison and transported by pack mules. Because the trip took two days and Elmer's Ranch (now known as Harmels) was the halfway point, it was logical that the small store was the overnight stop and the room above the store was used for sleeping.

Around the early 1920s, Elmer's Ranch homestead was divided in half to become Elsinore Cattle Co. and Elmer's Ranch. Because of the beautiful location of the store, cabins #2 through #19 were added along the Taylor River. The Elmers operated the ranch for many years and sold it in the mid-1940s to Ramsey, who modernized a few cabins by adding indoor plumbing. Ramsey sold the ranch two to three years later and it was again sold in 1958 to Bud Harmel.

In 1963, Bud's daughter and her family moved from Calgary, Alberta, Canada, to help run the ranch. This family ran the ranch for nearly 20 years. Steve, the youngest son of Bud's daughter, took over managing the ranch in 1979. He continued the Harmel family ranch until 2021 when he sold it to the Reynolds family. The Reynolds' are



MEMBER SPOTLIGHT

committed to restoring Harmels on the Taylor to its former glory and are ready to welcome guests into the family.

Only 13 miles to Taylor Reservoir and 20 miles from Gunnison and Crested Butte, you'll find Harmels on the Taylor, which is currently getting a facelift with newly remodeled cabins, a restaurant, bar and a wedding/event venue.

Enjoy the mountain setting and discover a sense of adventure with horseback riding trips through the wilderness, white water rafting in the flowing waters, nearby rock climbing down the canyon edges, or fly fishing in the award-winning stretch of Taylor River.

For more information, visit harmels.com.



▲ Ace Hardware employees help a GCEA member decide what electric outdoor power equipment will be best for her.



▲ Wheelies and Waves owner Braden Burton explains how an electric bike works.



▲ A GCEA member takes the Tesla out for a spin.

Charge Up for Summer

On Saturday, June 11, GCEA's member relations team hosted a special event to promote PowerWise Pledge™ rebates and beneficial electrification. Charge Up for Summer was held in Crested Butte at the four-way stop on 6th and Elk and the GCEA Chevy Bolt and Tesla Model 3 were on hand for test drives.

Ace Hardware, Wheelies and Waves,

and CB Sports joined the event to promote electric outdoor power equipment and demo electric bikes. The event was well attended and members asked questions about rebates, rooftop solar, EVs and EV charging.

GCEA handed out new document called "The Green Guide" that lists resources for "going green." Attendees enjoyed sweet treats from Third Bowl ice cream and

homemade chocolate chip cookies. Lots of swag items marked with GCEA's new logo were available.

Join us for the Watt Up Summer event on Friday, July 8 from 11 a.m. to 2 p.m. at Lake City Park. We will have EV test drives, electric power equipment demos and giveaways. For more information, visit www.gcea.coop.

EV DRIVE TO BUENA VISTA

BY ALLIY SAHAGUN MEMBER RELATIONS SUPERVISOR

Now that summer is here, it is time to get out and enjoy exploring different towns and places around Colorado. What better way to get around than in an electric vehicle? EVs provide a quiet, smooth, zero tailpipe emissions experience, and with all the new EV charging stations popping up throughout the state of Colorado, the fear of where to charge has been addressed.

In June, GCEA member relations team members Alliy Sahagun, Logann Long and Alantha Garrison ventured out in GCEA's Tesla Model 3 to visit beautiful Buena Vista and Salida on an EV road trip. The trio enjoyed the easy climb over Monarch Pass with the instant torque of the Tesla and marveled at the battery regeneration as they made their descent on the east side into Poncha Springs. Charging wasn't necessary in Buena Vista, but the group checked out



▲ Alliy charges GCEA's Tesla Model 3 in Buena Vista.

the charging options in town and found the Level 2 ChargePoint station adjacent to Main Street to be the perfect place to stop for a quick charge while checking out some of the local shops and restaurants. A little



ALLIY SAHAGUN

further down in the South Main district, the group used the PlugShare app and found a DC fast charger in the public parking area. Before heading home to Gunnison, the team stopped in Salida for a check on all the charging options in town, then noshed on burgers and fries at 50 Burger off Hwy 50.

Sound like a fun way to spend a day? Absolutely! You can take a similar trip by checking out GCEA's Chevy Bolt for the day, or take our Tesla Model 3 out for a quick 30-minute spin.

Call 970-641-3520 and speak to Alliy to schedule, or simply visit gcea.coop to schedule online.

ELECTRIFY YOUR LIFE



GCEA is excited to offer beneficial electrification rebates through the PowerWise Pledge™ program!

GCEA's new and enhanced rebates have been designed to incentivize members to reduce carbon emissions while increasing efficient use of electricity.

PowerWise Pledge™ Rebate Categories

- Transportation
- Home Heating
- Household Appliances
- Home Batteries

For more information, please visit gcea.coop or 970-641-3520.



Energy Efficiency Tip of the Month

Did you know the combined use of large appliances, such as dishwashers, clothes dryers and washing machines, account for the largest percentage of electricity use in the average U.S. home? Take small steps to save energy when using these appliances.

For maximum dishwasher efficiency, thoroughly scrape food from dishes before loading and run full loads only. In the laundry room, dry towels and heavier cottons separate from lighter-weight clothing, and clean the lint screen after every use. Washing clothes in cold water will save energy used to heat water.

Source: EIA and DOE

