



**GCEA**  
POWERING POSSIBILITIES

MAY 2022



**MAILING ADDRESS**

P.O. Box 180  
Gunnison, CO 81230-0180



**STREET ADDRESS**

37250 West Highway 50  
Gunnison, CO 81230



**ph** 970-641-3520  
**tf** 800-726-3523  
**fax** 970-641-7333  
**web** gcea.coop  
**email** gcea@gcea.coop

**We want to be social with you!**

Like us on Facebook and follow us on Instagram to find out about GCEA events, energy efficiency tips, safety tips and so much more.



facebook.com/  
GunnisonCountyElectricAssociation



@gcea\_news



## GCEA ANNOUNCES NEW REBATES Thanks to PowerWise Pledge™

We at GCEA are excited to offer our members several new and enhanced Beneficial Electrification rebate opportunities made possible through member participation in the PowerWise Pledge™ program. Beneficial Electrification is the practice of reducing atmospheric carbon and increasing energy efficiency through the adoption of electric technologies. GCEA's new and enhanced rebate offers are designed to help the GCEA membership reduce our collective carbon footprint while increasing our efficient use of electricity. The new rebate offers fall into four main categories: transportation, household appliances, home heating and home batteries.



### ELECTRIFY YOUR RIDE

The most innovative new transportation rebates are rebates of up to \$1,000 for the purchase of a pre-owned battery electric vehicle and up to \$500 for the purchase of a pre-owned plug-in-hybrid electric vehicle. These pre-owned EV rebates are designed to entice members who may be interested in going electric but are not willing or able to purchase a new EV. Switching from a fossil-fueled vehicle to an EV reduces transportation-related carbon emissions by at least 50% today and more in the future as our co-op's electric resources continue the transition to renewables. Switching to an EV also reduces fuel costs by up to

90%, depending on daily fuel pump prices, electricity rates, ambient temperatures and EV charging habits. For those who wish to go electric but do not need a pre-owned EV, GCEA is also offering a new rebate of up to \$250 for the purchase of a new electric moped or new electric motorcycle or utility terrain vehicle. GCEA has an existing rebate of up to \$150 for the purchase of a new electric bicycle.



### MOW DOWN COSTS ON HOME APPLIANCES & OUTDOOR EQUIPMENT

GCEA has increased all existing electric outdoor power equipment rebates by up to \$50 per purchase, exclusive of the existing e-bike offer. GCEA also increased the existing high-efficiency electric induction range rebate for new construction installations and natural gas and propane range replacements from \$350 per unit to \$500 per unit.



### PUMP UP YOUR HEATING EFFICIENCY

In an effort to motivate members to install heat pump water heaters, Tier 2 air-source heat pumps and ground-source heat pumps, GCEA will match existing available rebate offers. New heat pump water heater installations are now eligible for rebates up to \$740 per unit. New Tier 2 (cold-climate)

## YOUR CO-OP NEWS

air-source heat pump installations are now eligible for rebates up to \$4,800 per unit, and new ground-source heat pump installations will now be eligible for rebates up to \$1,000 per ton. Heat pump water heaters are seven times more energy efficient than natural gas and propane water heaters and over three times more energy efficient than traditional electric water heaters. New advances in air-source heat pump technology allows new Tier 2 models to effectively heat spaces when the outside air is as low as -20 degrees. For every unit of electricity used by a ground source heat pump, three to four units of heat are captured and transferred. This means a properly installed ground-source heat pump can be 300% to 400% more efficient.

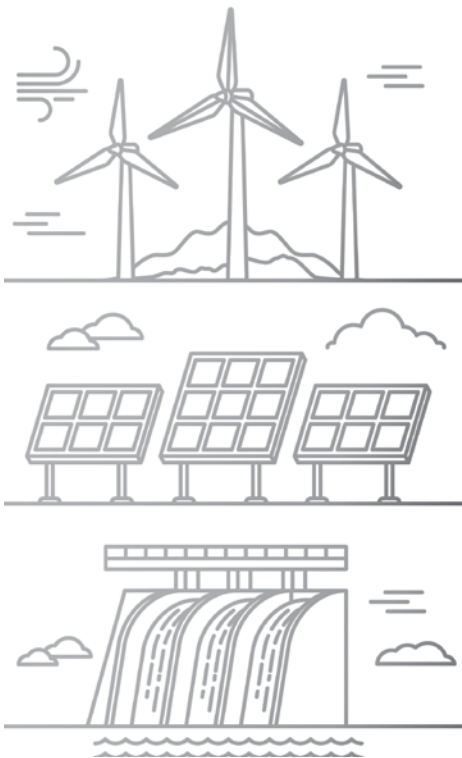


### SAVE THAT SOLAR PRODUCTION

Finally, GCEA hopes to encourage the greater adoption of home battery systems (especially by members who have or are considering rooftop solar systems) via new dispatchable and non-dispatchable home battery rebate offers. New dispatchable installations may be eligible to receive a rebate up to \$2,000 per installation. New non-dispatchable installations may be eligible to receive a rebate up to \$1,000 per

installation. GCEA hopes to encourage greater home battery adoption in order to improve home and distribution system resiliency, allow rooftop solar members to better utilize their daytime energy production, and help reduce GCEA's peak demand costs.

Certain restrictions and qualifications apply to each rebate offer. For detailed rebate information, including restrictions and qualifications, please visit [gcea.coop/energy-efficiency/rebates](http://gcea.coop/energy-efficiency/rebates) or call 970-641-3520 to speak with our energy use advisor.



## Member Spotlight – Alpengardener

Alpengardener has offered garden maintenance services for over 30 years in the Gunnison Valley. The garden center opened in 2001 in Crested Butte South, and recently added a location in Gunnison. Alpengardener has an experienced staff that enjoys being outdoors to care for our garden spaces and beautiful plants.

Alpengardener specializes in garden maintenance, garden consultation and design, customer container potting, landscape installation, lawn care and snow removal.

As a store, its goal has always been to carry a wide variety of plants and products that complement our valley. Alpengardener sells and uses organic, pet friendly fertilizers in their stores. It does its best to find and source the most beautiful plants the state has to offer. When you have a need for beautiful plants, flowers, shrubs or gardening supplies, think of the Alpengardener in CB South or in Gunnison.

2022 ANNUAL MEETING

⚡ RECHARGE ⚡

06 . 21 . 22 ⚡ 6 P.M.

GCEA HEADQUARTERS ⚡ 37250 W. HIGHWAY 50, GUNNISON

5 P.M. - BBQ DINNER ⚡ 6 P.M. - BUSINESS MEETING



\*2021 ANNUAL MEETING MINUTES ARE AVAILABLE AT  
WWW.GCEA.COOP OR BY CALLING 970.641.3520.

\*DUE TO UNCERTAINTY OF THE PANDEMIC, GCEA COULD LIMIT  
ATTENDANCE OR CHANGE THE MEETING FORMAT.





▲ Lake City EV Day

## GCEA EV CORNER

With gas prices on the rise and plenty of incentives to help bring down the total cost of ownership, electric vehicles are looking more and more like an attractive option when purchasing a vehicle. If you have never driven an EV, now is the perfect time to get behind the wheel. GCEA offers test drives in a Tesla Model 3 and a Chevy Bolt. Call Alliy today to set up a test drive and she will go over all the benefits of EV driving, including GCEA's new PowerWise Pledge™ rebate on pre-owned EVs.

When you purchase a pre-owned, all-electric EV, you are eligible for a rebate of 25% of the cost up to \$1,000 and 25% of the cost up to \$500 on pre-owned plug-in hybrid EVs with a battery size of at least 25 kilowatts.

Worried about charging? GCEA's got you covered with 13 charging stations throughout the service territory to charge up when running around town, plus we offer rebates on home chargers of your choice or a free ChargePoint Home Flex charger for signing up for our Charge at Home program. For all information related to GCEA's EV programs, visit [gcea.coop/energy-efficiency/electric-vehicles](http://gcea.coop/energy-efficiency/electric-vehicles) or give us a call at 970-641-3520.

**Charge Up for Summer Event!** Join us Saturday, June 11, from 11 a.m. to 2 p.m. at the EV station by the 4-way stop in Crested Butte to enjoy test drives and demos of all things electric — EVs, e-bikes, e-motorcycles, electric outdoor power equipment — as well as food and beverages. Own your own electric vehicle, bike or outdoor power equipment? Bring it with you and share what you love about going electric!



▲ Crested Butte EV day



▲ Lake City EV day



## May is Electrical Safety Month

Electricity lights homes and businesses, provides warmth and keeps appliances and equipment running smoothly. During Electrical Safety Month, GCEA provides these electrical safety tips to remember to stay safe outdoors:

# LOOK OUT

### FOR POWER SOURCES

**10'** ⚡ Do not get within 10 feet (in any direction) of a power line.

Be aware of power lines when working on the roof.

Do not trim branches or limbs near power lines.

Be careful when carrying long or tall objects such as ladders or poles.

811 Before you dig, call 811 to have underground utilities marked.

Do not dig near padmount transformers or other utility equipment.



Look up



Safe Electricity.org

## MAY CO-OP CALENDAR

Monday, May 30 GCEA offices closed – Memorial Day Holiday



# PEAK TIME PERKS METER DATA MANAGEMENT PILOT PROJECT

BY ALANTHA GARRISON ENERGY USE SPECIALIST

From July 2021 to December 2021, GCEA ran a pilot project called Peak Time Perks to test our Meter Data Management (MDM) system and ensure that our communications are solid and that our reported interval data are accurate. In our mountainous area, communication outages occur occasionally and prevent hourly and daily readings from reporting back to our office. The MDM system sees the missing readings, flags them, and runs estimations on the missing readings to find the correct readings. The Validation, Estimation, and Editing process is known as VEE, and the estimations are based on data validation processes established by the North American Energy Standards Board and the Edison Electric Institute.

We also wanted to provide our residential members with an opportunity to be on a time of use (TOU) rate and see their on-peak and off-peak usage and understand how changes to usage habits affect the cost on this rate. On-peak hours occur from 5 to 10 p.m. Monday through Saturday, and during this time the cost per kilowatt-hour is higher (\$0.23664) than the standard residential rate cost per kWh (\$0.12918). Off-peak hours occur the rest of the time and all day Sunday, and the cost per kWh during this time is lower than the standard residential rate cost per kWh (\$0.08976). Members in the program were billed the same as their current residential rates, but cost comparisons between the residential rate and TOU rate were run outside of the billing system. If the member would have saved money on the TOU rate, they received a bill credit for the cost savings amount. If it would have cost more to be on the TOU rate, we did not charge the member for the cost increase. The results were presented to members in the program each month.

We are pleased to report that on the GCEA MDM side, we had very few communication outages that prevented readings from reporting to our office, and when these outages did occur, the missing readings were estimated correctly by the MDM system. We were also pleased to see cost savings and increases on the TOU rate compared to the standard residential rate fall into the expected ranges for total usage and the split between on-peak and total usage. Generally, cost savings occur with average usage higher than 1,000 kWh each month, and cost increases occur when usage is less than 1,000 kWh per month on average. The lower the average monthly usage, the more usage needs to be moved to off-peak hours to realize cost savings.



## PEAK TIME PERKS

BEAT THE PEAK AND SAVE MONEY!

Following is a summary of the results of the program over the 6-month period:

- 36 accounts signed up.
- 22 accounts received credits.
- On average, 15 of 36 accounts would have had a cost decrease and received an average credit each month of \$10.03.
  - > Average monthly usage for these accounts ranged from 730 to 3,968 kWh.
  - > On-peak usage for these accounts ranged from 17% to 26% of total monthly usage, with a mean of 20%.
- On average, 21 of 36 members would have had a cost increase of \$5.29 each month.
- Average monthly usage for these accounts ranged from 604 to 2,414 kWh.
- On-peak usage for these accounts range from 18% to 31% of total monthly usage, with a mean of 25%.

We thank the members who participated in this program and provided feedback. Most found that it was relatively easy to change habits and shift their usage during on-peak hours to off-peak hours. If you want to learn more about GCEA's TOU rate and whether it would be a good fit for you, please call me at 970-641-3520 or visit [gcea.coop/energy-efficiency/peak-demand-information](http://gcea.coop/energy-efficiency/peak-demand-information).



### MAY WORK ANNIVERSARIES

**Jeff Hanggi — Crested Butte Working Foreman,  
26 years**

**Jo Anne Bateman — Accounting Assistant,  
12 years**

**Logann Long — Communications and  
Outreach Coordinator, 8 years**