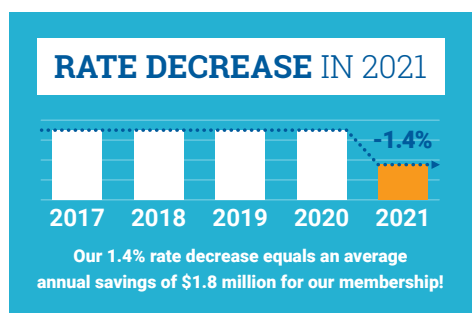




PVREA Rates – A Key Member Value

BY JEFF WADSWORTH PRESIDENT & CEO

Keeping your monthly electric bill as low as possible – especially during this season when it seems costs increase everywhere we look – is an important goal for your cooperative's board. That's why I'm excited to announce your co-op continues to have some of the lowest electric rates in the state and the region.



As your cooperative, our business model is to provide "at cost" service. Prices for natural gas, propane, and the rates of other regional electric utilities have continued to increase. We continue to lead the charge in providing at cost energy by ensuring we are "making hay while the sun is shining". Our growth has been tremendous over the last 5 years, allowing us to become more efficient all the while rebuilding and maintaining our system like never before.

I am pleased we were able to provide a rate reduction earlier this year. I certainly believe our focus on you, our members, is something that differentiates us as a cooperative from any other type of business out there.

We understand heating needs significantly impact winter energy bills. Right now we're also spending extended time indoors,

using more lighting, hot water, appliances, and electronics. Electricity usage increases even more over the holidays as we celebrate with family and loved ones. And yet our attention to providing at cost service offers you more value than ever.

If you are looking for some special gifts this holiday season, you may want to check out our rebates to help keep even more money in your pocket. With the rise of costs for other fuels used to heat your home, it is a great time to consider heat pump technology – the most advanced and efficient heating and cooling system available today. **See page 7 for**

electric gift ideas, how to apply for rebates, and more information on heat pumps.

As a member owned cooperative, we exist to provide value to our members. We hope you enjoy our product that is becoming more reliable and affordable each and every year! We are working every day to keep your bill as low as possible while keeping your power flowing. Rest assured, your cooperative is here for you when you need us!

From all of us at Poudre Valley REA, please accept our wishes for happiness and joy to you and your family now and throughout the New Year. Merry Christmas!



ABOUT YOUR CO-OP

PVREA serves energy solutions to over 49,000 homes and businesses in Boulder, Larimer, and Weld counties. We are a member-owned co-op, led by those we serve.

OUR MISSION

We are committed to providing safe, reliable, efficient energy solutions with exceptional service to our members.



CONTACT US

1-800-432-1012
pvrea@pvrea.coop
www.pvrea.coop



MAILING ADDRESS

Poudre Valley REA
7649 REA Parkway
Fort Collins, CO 80528



SOCIAL

facebook.com/PoudreValleyREA
twitter.com/PoudreValleyREA
instagram.com/poudre_valley_rea

BOARD OF DIRECTORS

Chair Steven Anderson Larimer County	Director Thaine Michie Larimer County
Vice Chair Rick Johnson Larimer County	Director Jan Peterson Larimer County
Secretary Peter Hyland Weld County	Director Jack Schneider Weld County
Director Sheryl Dryer Henderson Larimer County	Director Ron Sutherland Boulder County
Director Bryan Ehrlich Larimer County	