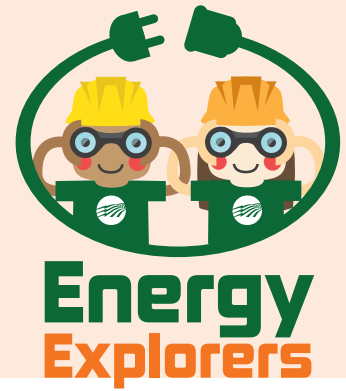


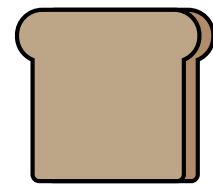
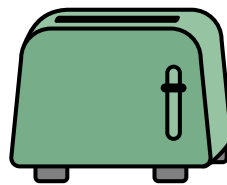
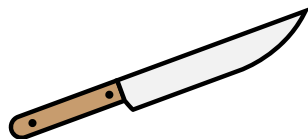
ELECTRICAL HAZARD ACTIVITY



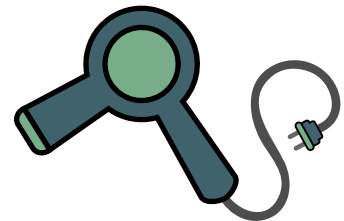
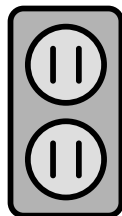
The Energy Explorers want to remind you to always practice electrical safety! Remember, electricity can be dangerous, so make sure to avoid electrical hazards.

DIRECTIONS: Circle the item that doesn't belong. **HINT:** If all three items in the row were combined, which would make the situation an electrical hazard?

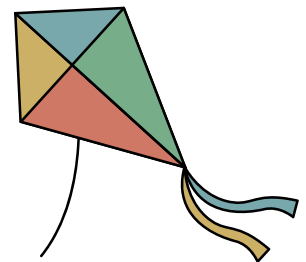
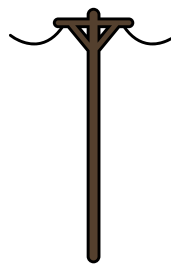
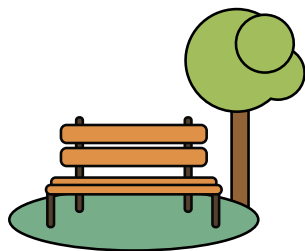
1



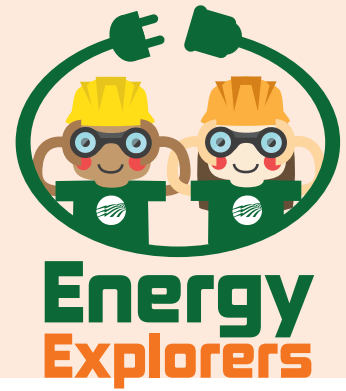
2



3



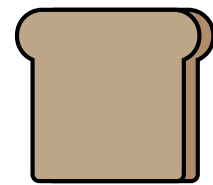
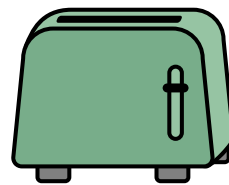
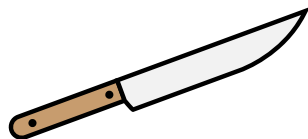
ELECTRICAL HAZARD ACTIVITY



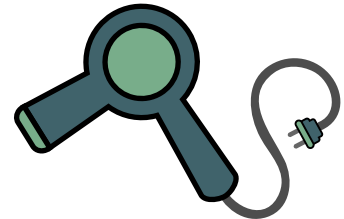
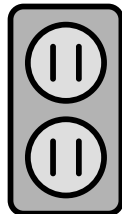
The Energy Explorers want to remind you to always practice electrical safety! Remember, electricity can be dangerous, so make sure to avoid electrical hazards.

DIRECTIONS: Circle the item that doesn't belong. **HINT:** If all three items in the row were combined, which would make the situation an electrical hazard?

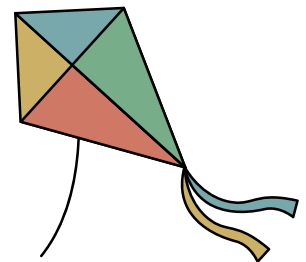
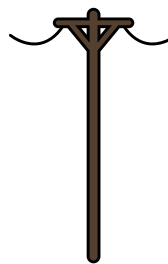
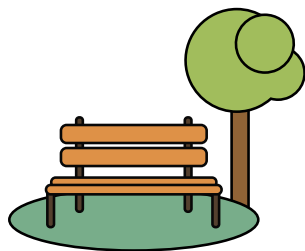
1



2



3



Answer Key

1. KNIFE

2. SINK

3. POWER LINES