

YAMPA VALLEY ELECTRIC ASSOCIATION

FEBRUARY 2020



MAILING ADDRESS

2211 Elk River Road
Steamboat Springs, CO 80487



STEAMBOAT SPRINGS SERVICE CENTER

2211 Elk River Road
Steamboat Springs, CO 80487



ph 970-879-1160
tf 888-873-9832
fax 970-879-7270
web www.yvea.com



CRAIG SERVICE CENTER

3715 East US Highway 40
Craig, CO 81625



ph 970-824-6593
tf 888-873-9832
fax 970-824-7134



facebook.com/
YampaValleyElectricAssociation



@YampaValleyElec



instagram.com/
yampavalleyelectriccoop

Yampa Valley Electric Association is a cooperative that provides value to its consumer-members by delivering safe and reliable electric service in an environmentally and financially responsible manner.

YAMPA VALLEY ELECTRIC ASSOCIATION IS AN EQUAL OPPORTUNITY PROVIDER AND EMPLOYER.

ELECTRIC RATES EXPLAINED A THREE-PART SERIES

BY STEVE JOHNSON
GENERAL MANAGER & PRESIDENT



STEVE JOHNSON

On April 1, a recently approved rate adjustment will be implemented by Yampa Valley Electric Association. The adjustment will increase the Small General Service access charge and energy charge to \$34.75 and \$0.0945 per kilowatt-hour, respectively. The proposed adjustment will increase the Medium General Service access charge and energy charge to \$37.45 and \$0.09055 per kWh, respectively. Finally, the proposed adjustment will increase the energy charge for rates 10D, 81 and 82 to \$0.0952, \$0.0479 and \$0.0488 per kWh, respectively.

In this column, I want to explain what goes into developing YVEA rates in part one of a three-part series.

PART 1: WHAT MAKES UP YVEA RATES

In my January column, I informed you that I would share more information about the upcoming rate adjustment that is needed to cover what is necessary to bring power to your homes and businesses. Unlike for-profit utilities whose electric rates focus on profits and the financial return for their investors, YVEA and other nonprofit electric cooperatives focus on providing you with power, not profits.

Purchasing dependable power

While there are many elements that impact what you pay YVEA for electricity, the most substantial item is what YVEA

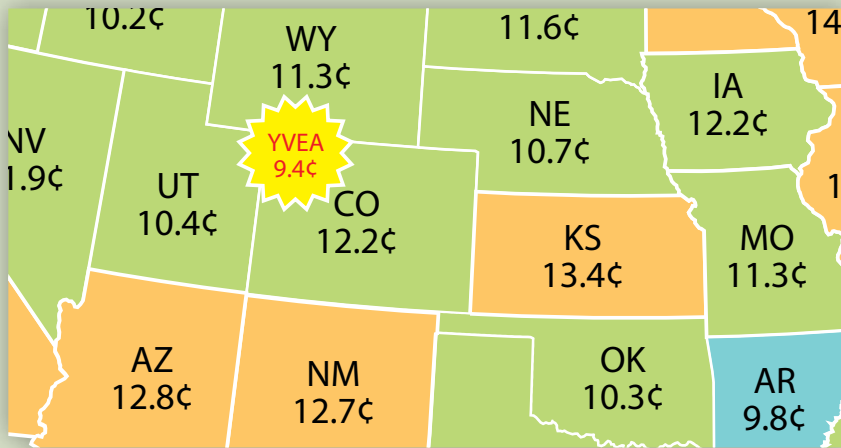
pays Xcel Energy for wholesale electricity. Because your electric cooperative does not generate power but distributes power, purchasing our power supply accounts for 62% of YVEA's operational expenses, and the cost of purchasing that power changes minute by minute, dependent upon member usage at any given time. The greatest demand for YVEA members is during the month of January, when more home heating is being used.

To respond to consumer demand and government oversight, Xcel Energy has been adding more renewable energy and using less fossil fuels such as coal. Closing their fossil fuel plants brings additional cost to Xcel Energy, who passes that cost on to its wholesale power customers like YVEA. As your member-owned cooperative, YVEA simply cannot continue to absorb the upward pricing pressure from Xcel Energy nor other increased costs of doing business. As a result, we had to adjust our rates to factor in these related costs.

In part two of this series, I will share information about our transmission and distribution system and the related costs to bring dependable power to our 7,000-square-mile territory in northern Colorado and southern Wyoming.

YVEA Price for Residential Electricity Lower than Average

U.S. Average: 12.9¢ per kWh



Residential Average Price (cents per kilowatt-hour)

- Under 10 ¢
- Over 12.5¢
- 10¢ to 12.5¢

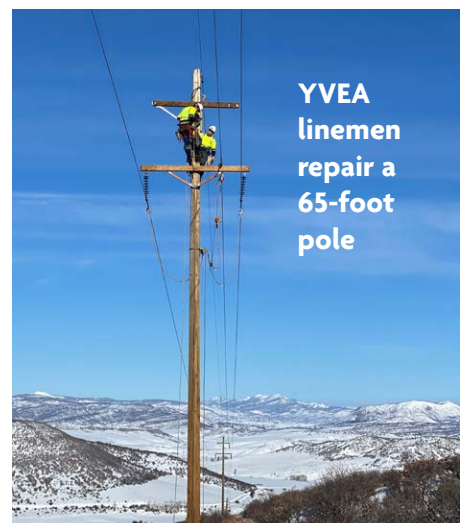
Source: U.S. Energy Information Administration
 Numbers rounded to nearest tenth of a cent
 U.S. numbers are 2018 figures, in cents per kWh.
 YVEA number is the 2020 figure.



Our Youth Power Our Future

Yampa Valley Electric Scholarship Program

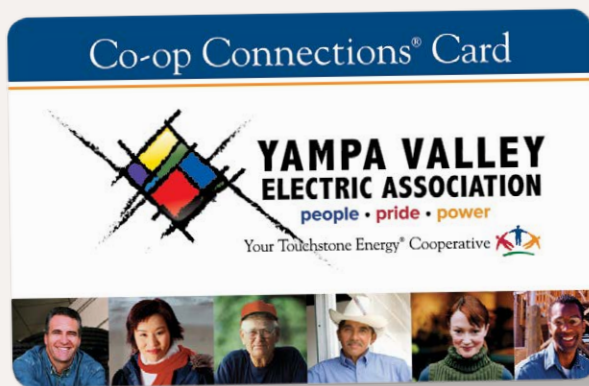
What is the Yampa Valley Electric Association Scholarship Program? This program is designed to encourage the academic achievements of the high school seniors or current undergraduate students who live in the YVEA service territory. The scholarship must be used for educational costs and the student must enter college in the fall of the school year of which the scholarship is given. Checks will be made payable directly to the college at the beginning of the Fall semester. All returning scholarship recipients must maintain academic status to be eligible to re-apply in subsequent years. For more information on the program, eligibility requirements, and to get an application, please visit www.yvea.com/scholarships.



YVEA linemen repair a 65-foot pole

YVEA Wants to Advertise Your Business for FREE!

Business owners, promote your business for free through our new YVEA Co-op Connections program. We do all the advertising for FREE, all we ask is that you provide a discount for our members. We will do the promoting to get our 25,000 members through your doors. We also have a mobile app that geo locates the discounts, so our members know the businesses to visit. To learn more, go to <https://www.yvea.com/coop-connections-program> to watch a short video. From there, you can sign up your business to participate or request more information.



Sign up today and grow your business with the free help of YVEA and more than 20,000 of your fellow members.

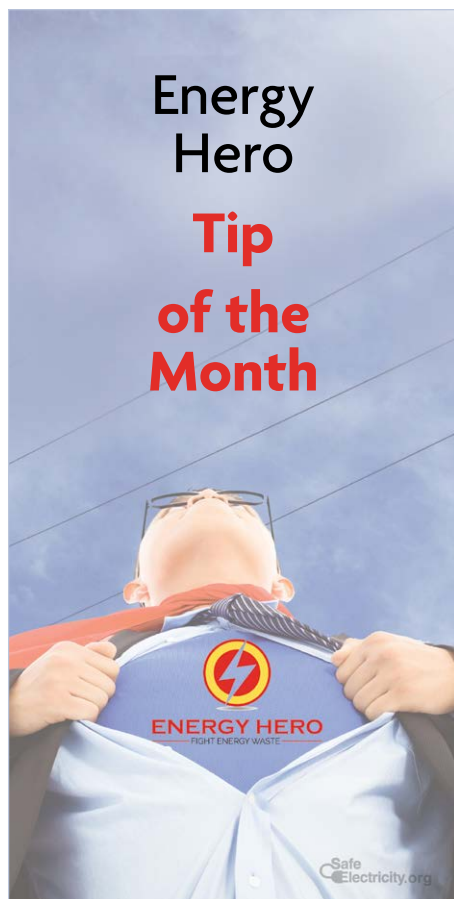
Cen\$ible Energy Rebates program is now YVEA Energy Hero Rebates

YVEA brought the former Cen\$ible Energy rebate program in-house and revised, aligned and renamed it the Energy Hero Rebates program to better fit the current and future strategic direction of the cooperative and manage it through member outreach. The new rebate program launched January 1, 2020.

The New Energy Hero Rebates program will offer rebates to YVEA

members on LED lightbulbs, appliances, heat tape timers and programmable Wi-Fi-enabled electric thermostats.

Additional rebates will also be offered, including electric vehicle chargers, home weatherization products, efficiency heating, smart home and home security products and more. **Learn more at yvea.com/rebates.**



Smart Thermostats

Smart thermostats are now available for line voltage electric heating. Check out the Mysa smart thermostat to see how much you can save.

A smart thermostat is a Wi-Fi enabled device that automatically adjusts heating and cooling temperature settings in your home for optimal performance and savings.

- **Set your schedule:** Smart thermostats aim to learn your schedule, but you can help it out by setting your schedule via its interface or web app. Over the next week or so, you and your new thermostat will work together to create the right program for your home.
- **Start saving:** The U.S. Department of Energy estimates savings of about 1% for each degree of thermostat adjustment per eight hours and recommends turning thermostats back 7 to 10 degrees from their normal settings for eight hours per day to achieve annual savings up to 10%.
- **Go low:** Smart thermostats steer you toward energy-efficient temperatures, but you can save even more money by finding ways to keep yourself warm while the house stays cooler. Bundle up and enjoy the savings.
- **Adjust your temperature:** When you're not following your typical weekly schedule, remember to adjust your temperature accordingly via the companion app.
- **Use the companion app and web portal:** The app is an extension of your thermostat. Use it to lower the temp when you step out for a few hours of errands or come home later than your usual schedule.
- **Set up vacations:** Use the vacation feature on smart thermostats to easily lower the heat while you're away. (Be careful — if frozen pipes are a risk in your area, keep your "away" temperature around 55 degrees).
- **Analyze your energy use:** Look at the monthly reports to see how you did. Try to beat your previous month — and other users in your area.

For more information visit the YVEA website yvea.com/diy-library for more about smart thermostats and Energy Hero rebates on programmable thermostats at yvea.com/rebates.

YVEA SPONSORSHIPS

Cherish the Little Things Art Show

Connections 4 Kids in Craig, February 6-8

107th Steamboat Springs Winter Carnival

Night Extravaganza, February 9



2020 ANNUAL MEETING AND BOARD ELECTIONS

The Annual Meeting of the Members of Yampa Valley Electric Association is held annually for the purpose of electing directors, passing on reports covering the previous fiscal year and transacting such other business as may come before the meeting. The 2020 Annual Meeting is scheduled for June 23, 2020, at the Valley Community Center, 255 W. Osborne St., Baggs, WY 82321.

Director districts up for election are:

District 2, Craig: Larry Ellgen

District 3, Craig: Jean Stetson

District 6, Steamboat Springs: Tom Fox

The area served by the association is divided into nine districts. No member shall be eligible to become or remain a director who is not a bona fide resident in the director district for which they are elected or appointed. Legal descriptions of each

district can be found in Article XVI, Director Districts, in the bylaws of the association, or at www.yvea.com.



A nomination for director may be made only by written petition signed by at least 15 members of the association. The nominating petition and director qualification affidavit may be found at www.yvea.com or picked up at the YVEA offices in Steamboat Springs or Craig. All petition materials must be filed at the Steamboat Springs office no later than Friday, May 8, 2020.

Directors are elected for a three-year term by the members of the association. Each member of the association is entitled to vote in the election of all directors, excluding appointments. Ballots will be mailed on Friday, May 22, 2020. To be valid and counted, each ballot must be signed by the member whose name is on the label and the ballot must be received at the location of the third-party ballot counter by Thursday, June 18, 2020. If you are unsure if your ballot will be received at the location of the third-party ballot counter by Thursday, June 18, 2020, please plan to attend the annual meeting on Tuesday, June 23, 2020, at the Valley Community Center, 255 W. Osborne St., Baggs, WY 82321, where you will receive a replacement ballot to be completed and submitted at the meeting.

YVEA is Luminating Craig with Ultra-Fast Broadband

The Luminate Fiber's broadband infrastructure has been constructed in Craig and the new high-speed broadband company is lighting its fiber optic network in this area currently. We are currently conducting testing and signing up customers for residential and business services to be installed throughout the winter. The first areas within Craig to be lit up are areas north and west of Yampa street and I-40. Mainly the Northwest quadrant of Craig. "We are currently focusing on connecting residential customers, but we are signing up businesses on a preferred customer installation list," said YVEA General Manager Steve Johnson. If you are interested and want to learn more, please visit us at www.luminatebroadband.com.



Small Change Big Difference



Be a difference maker in your community

Since forming in 2015, the nonprofit Operation Round Up organization and Yampa Valley Electric Association have improved lives and communities thanks to YVEA members who round up their bill to the next dollar through Operation Round Up. The pennies members donate each month average only \$6 a year per member but have contributed more than \$345,000 to nonprofit organizations in the YVEA service territory.

Start 2020 by making a difference to organizations such as Lift Up, Boys and Girls Club, Love, Inc., Yampatika, United Way, The Haven, Baggs Fire & Rescue and many more.

Signing up for Operation Round Up is easy. Simply call 970-879-1160, email OperationRoundUp@yvea.com or visit www.yvea.com/operation-roundup.